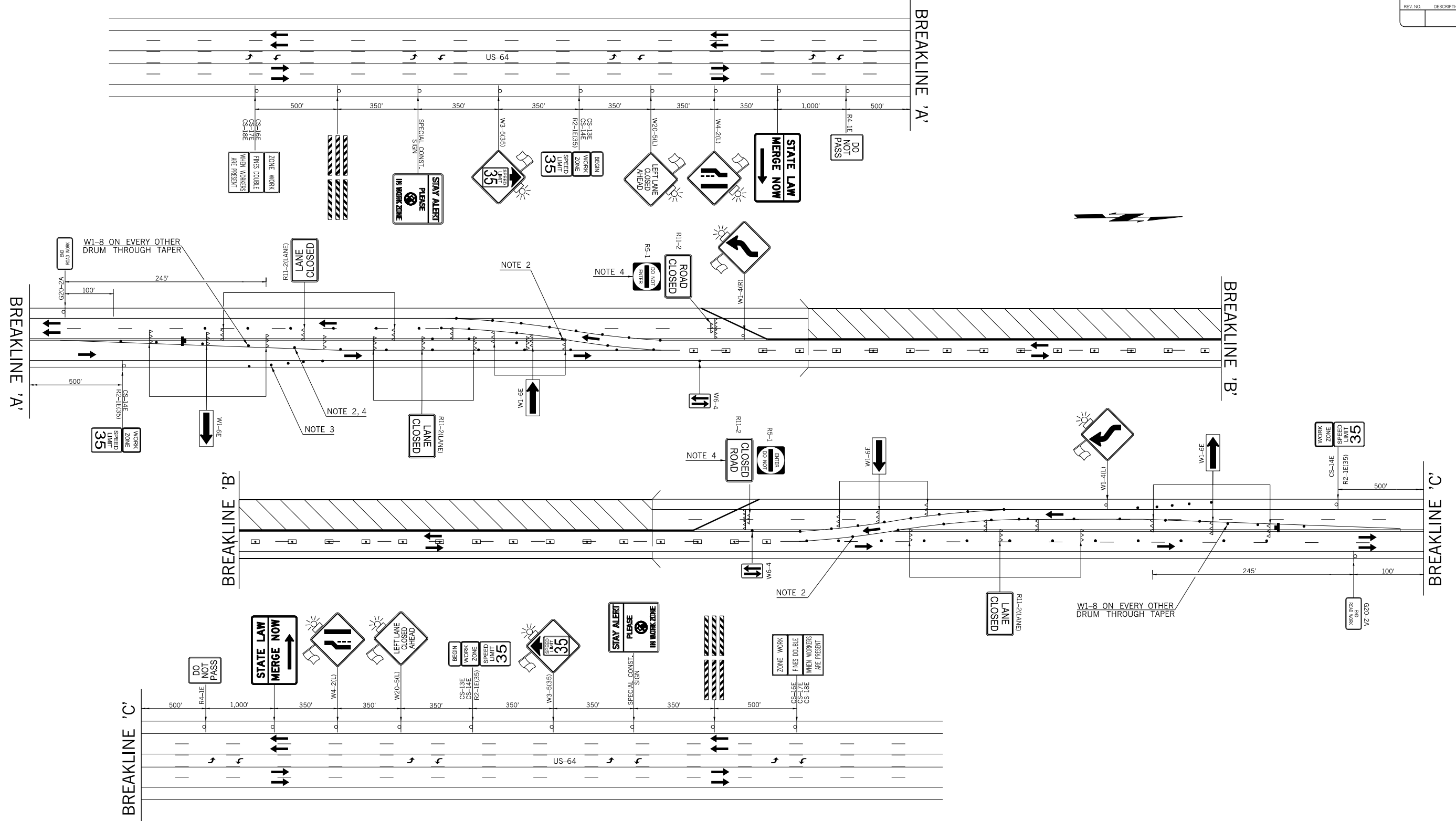


| REVISIONS |             |      |
|-----------|-------------|------|
| REV. NO.  | DESCRIPTION | DATE |
|           |             |      |



**NOTE 1**  
 MAXIMUM SPACING BETWEEN CHANNELIZING DEVICES (FEET) SHALL BE EQUAL TO TWICE THE POSTED SPEED LIMIT (M.P.H.) WITH THE FOLLOWING EXCEPTIONS. SPACING SHALL NOT EXCEED 50 FEET FOR CONES OR TUBE CHANNELIZERS. SPACING SHALL NOT EXCEED 75 FEET FOR CHANNELIZER CONES. SPACING SHALL NOT EXCEED 100 FEET FOR TYPE II BARRICADES, VERTICAL PANELS OR DRUMS.

**NOTE 2**  
 MAXIMUM SPACING BETWEEN CHANNELIZING DEVICES (FEET) SHALL BE EQUAL TO THE POSTED SPEED LIMIT (M.P.H.) WITH THE FOLLOWING EXCEPTIONS. SPACING SHALL NOT EXCEED 25 FEET FOR CONES OR TUBE CHANNELIZERS; IT SHALL NOT EXCEED 50 FEET FOR TYPE II BARRICADES, VERTICAL PANELS OR DRUMS.

**NOTE 3**  
 A MINIMUM OF FIVE (5) CHANNELIZING DEVICES SHALL BE PLACED THRU THIS AREA.

**NOTE 4**  
 A SUFFICIENT NUMBER OF TYPE III BARRICADES, WITH SIGNS AS SHOWN, SHALL BE USED TO COMPLETELY CLOSE THE ROADWAY TO TRAFFIC FROM THE EDGE OF PAVEMENT TO THE EDGE OF PAVEMENT.

FOR INFORMATION REGARDING THE LENGTHS OF TAPERS, TANGENTS, AND CROSSOVERS, AS WELL AS THE SPACING OF CHANNELIZING DEVICES, SEE STANDARD DRAWING TCS2-1-(LATEST REVISION).

- KEY:
- SIGN
  - DRUM
  - CHANNELIZER CONE
  - WORK AREA
  - ARROW DISPLAY
  - TYPE III BARRICADE
  - PORT. LONG. BARRIER

BRIDGES 'A' & 'B'

**TRAFFIC CONTROL DETAIL**  
**US-64 SOUTHBOUND LANES CLOSED**

|                                      |     |      |
|--------------------------------------|-----|------|
| Drawn                                | RGN | 6/16 |
| Design                               | RGN | 6/16 |
| Checked                              | SEB | 6/16 |
| TRAFFIC ENGINEERING<br>JAMI L. SHORT |     |      |

|                           |                              |                |
|---------------------------|------------------------------|----------------|
| STATE OF OKLAHOMA         | DEPARTMENT OF TRANSPORTATION | DIVISION 8     |
| JOB/PROJECT NO. 31944(04) |                              | SHEET NO. T002 |

MULTIPLE COUNTY/

DRAWING NOT TO SCALE